

# SOLIDWORKS 2016 - What's New

## **PDM Standard Installation**

SOLIDWORKS PDM Standard 2016 is a new document management product offer that is based on the same architecture used by the current SOLIDWORKS Professional PDM product (previously known as Enterprise PDM). This makes SOLIDWORKS PDM Standard 100% compatible with SOLIDWORKS Professional PDM which will enable it to be easily upgraded if and when a it becomes a need due to changing business needs.

- [SOLIDWORKS Workgroup PDM Support Lifecycle](#)
- [Installation Methods](#)
- [Using SOLIDWORKS Installation Manager](#)
- [Using SOLIDWORKS PDM InstallShield Wizard](#)

### SOLIDWORKS Workgroup PDM Support Lifecycle

SOLIDWORKS Workgroup PDM (WGPDM) support will end after SOLIDWORKS 2017. Customers already using SOLIDWORKS WGPDM can continue to install it, but should begin planning to migrate file vaults to SOLIDWORKS PDM Server.

- SOLIDWORKS 2016 release - SOLIDWORKS WGPDM will still be included with SOLIDWORKS Professional and Premium and as separately purchased products.
- SOLIDWORKS 2017 release - SOLIDWORKS WGPDM will still be included with SOLIDWORKS Professional and Premium and as separately purchased products. SOLIDWORKS WGPDM will be supported until December 31st, 2018.
- SOLIDWORKS 2018 release - SOLIDWORKS WGPDM no longer supported for new or existing customers.

### Installation Methods

You can install SOLIDWORKS PDM Standard using:

- SOLIDWORKS Installation Manager (SLDIM)
- SOLIDWORKS PDM InstallShield Wizard
- *Note: You must install the SolidNetWork License Manager separately.*
- *Note: The installations of the SOLIDWORKS PDM clients and the SOLIDWORKS PDM servers are separate.*

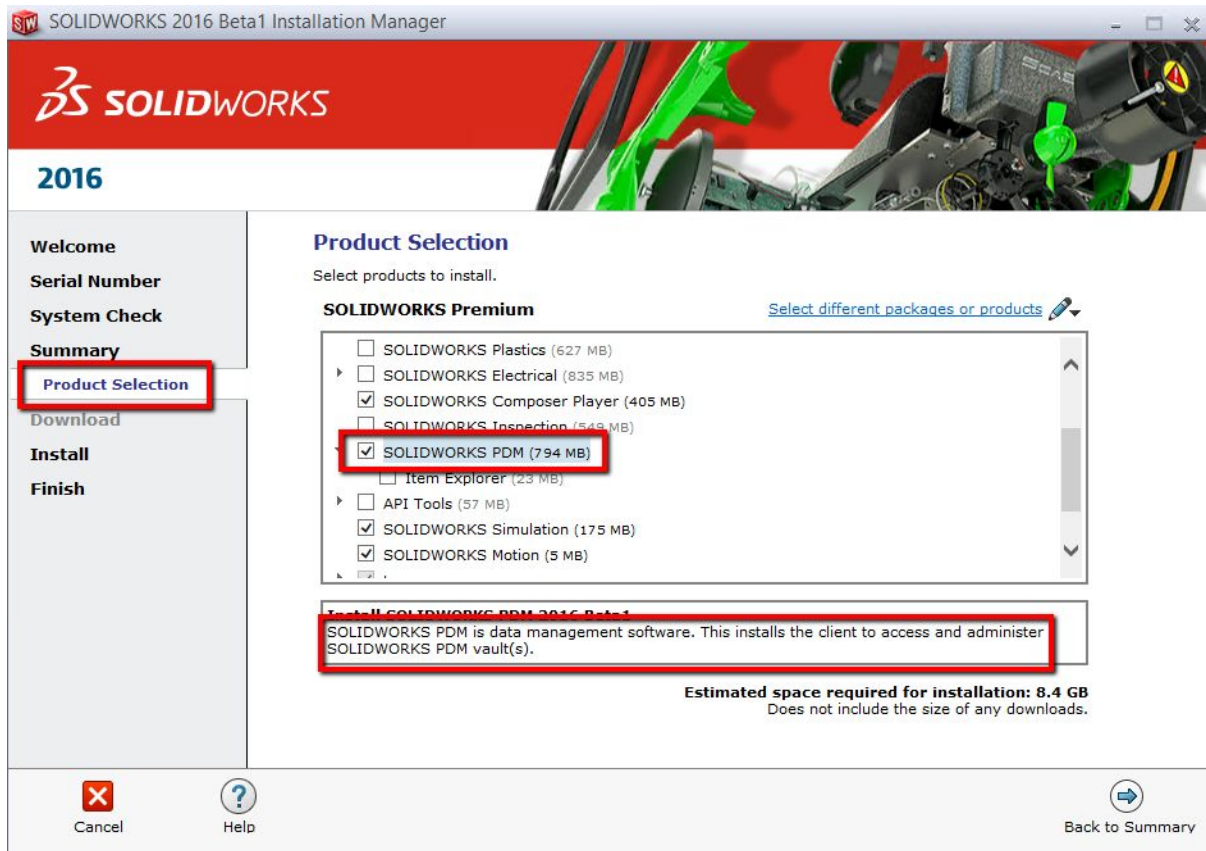
# SOLIDWORKS 2016 - What's New

## PDM Standard Installation

### Installing Using the SOLIDWORKS Installation Manager

If you install using the SOLIDWORKS Installation Manager, the following options are available:

- **Individual install (client):** SOLIDWORKS PDM Standard is preselected on the Product Selection page if you are licensed for SOLIDWORKS Professional or Premium.

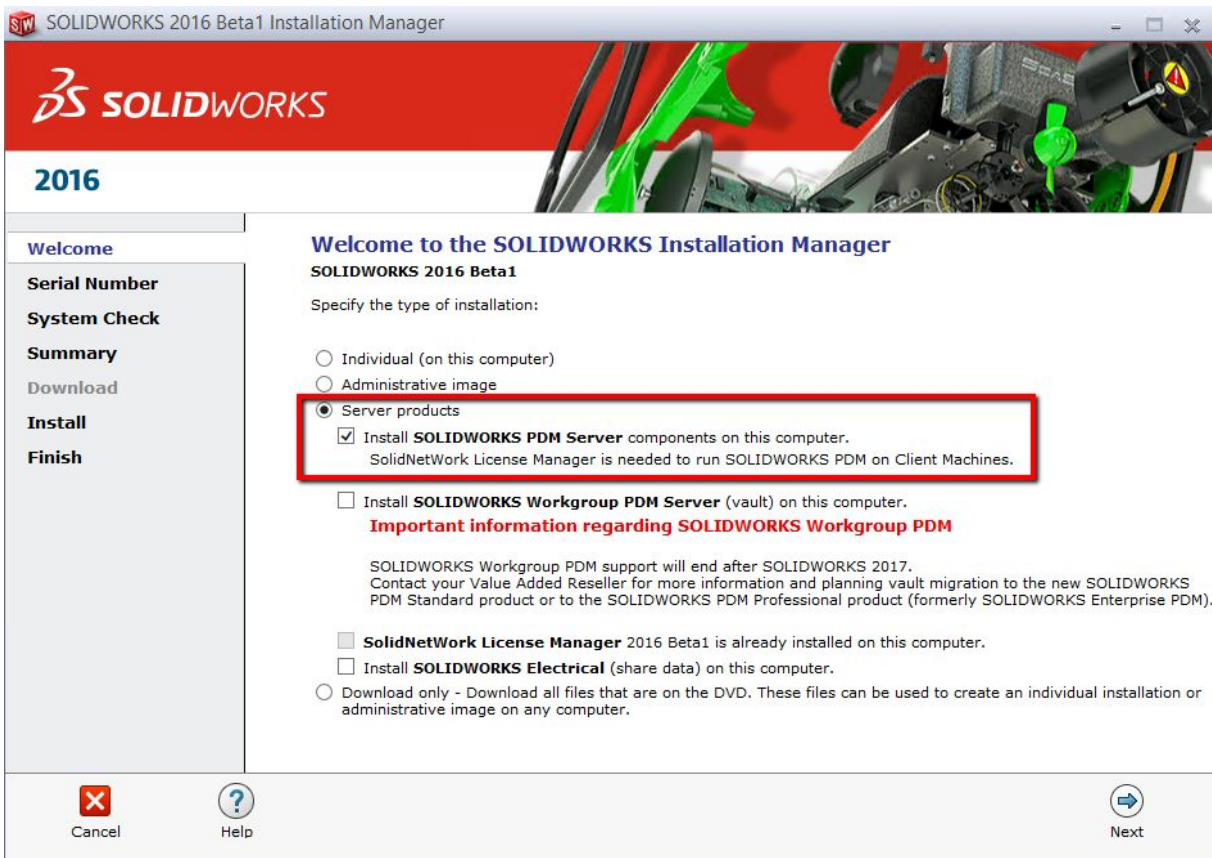


- **Administrative image (client):** If your organization uses the SOLIDWORKS Administrative Image Option Editor, you can create and deploy the administrative image for SOLIDWORKS PDM simultaneously with other SOLIDWORKS products.

# SOLIDWORKS 2016 - What's New

## PDM Standard Installation

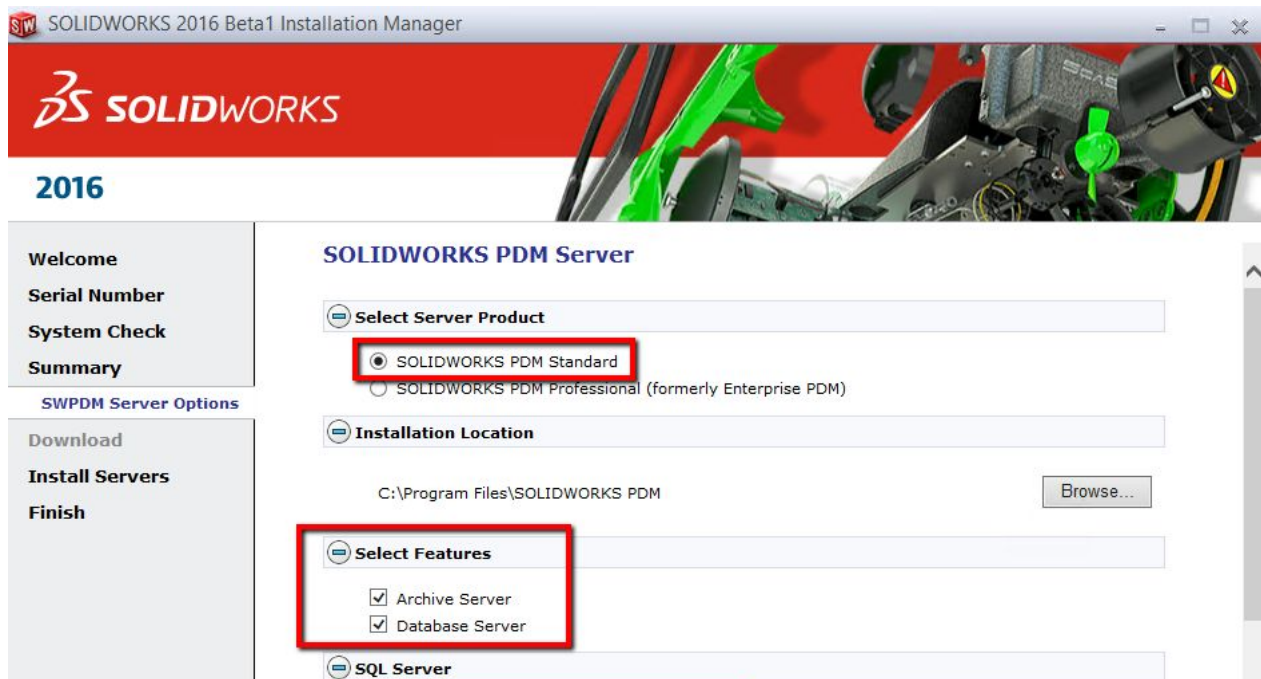
- **Server Products:**



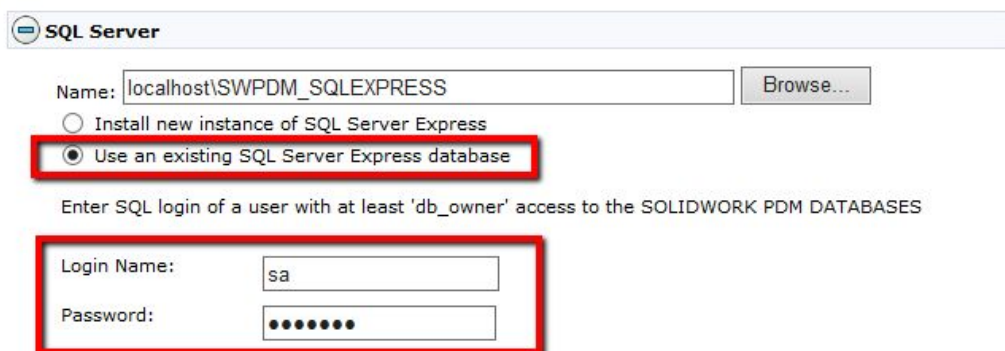
- Select **SOLIDWORKS PDM Server** and select **Next**.
- *Note: For SOLIDWORKS PDM Standard, you must install SQL Express before installing the SOLIDWORKS PDM archive and database server services.*
- *The install file for SQL Express can be found under \prereqs\SQLServer\sqlexpr\_x64\_enu.exe from the download or installation media.*

# SOLIDWORKS 2016 - What's New

## PDM Standard Installation



- Select **SOLIDWORKS PDM Standard** under *Server Product*
- The **Installation Location** setting is where the application files and the Archive folder.
  - The default location for the file archive is:  
C:\Program Files\SOLIDWORKS PDM\Data
- Select **Archive Server** and **Database Server** under *Features*
- In the **SQL Server** section, designate the SQL Express server location and SQL login with at least 'db\_owner' access.



- Select **Next** to complete the installation.
- *Note that the client software must be installed to access the Administration application.*



# SOLIDWORKS 2016 - What's New

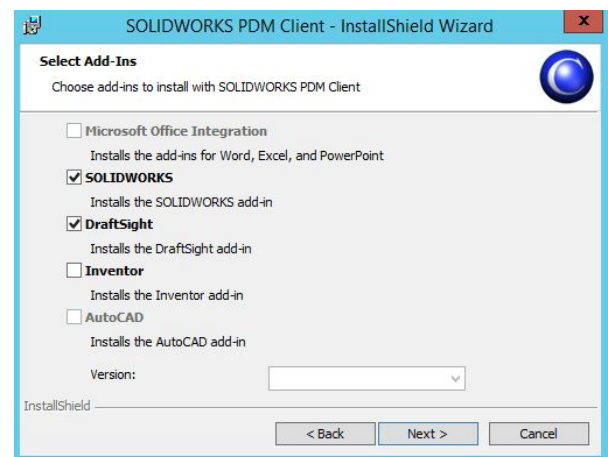
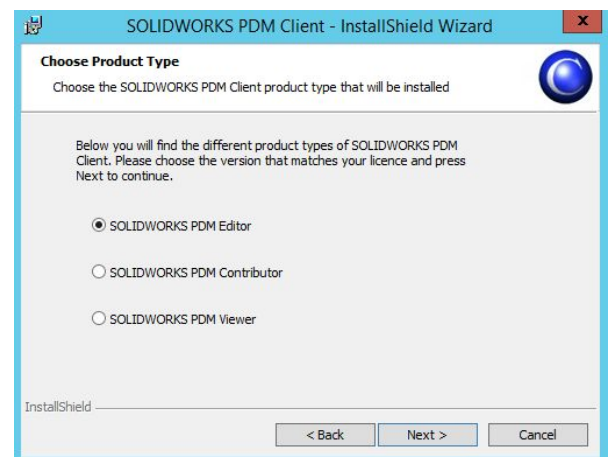
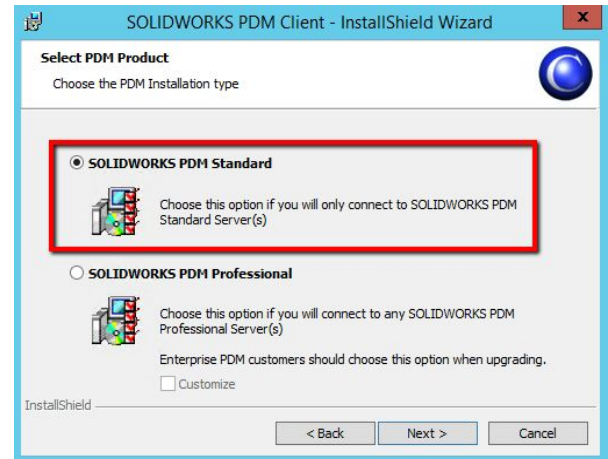
## PDM Standard Installation

### Installing Using the SOLIDWORKS PDM InstallShield Wizard

After you install and configure the SolidNetWork License Manager using the SOLIDWORKS Installation Manager, you can install SOLIDWORKS PDM using the SOLIDWORKS PDM InstallShield Wizard.

#### SOLIDWORKS PDM Standard client

- The install file for PDM Standard Client can be found under `\swpdmclient\setup.exe` from the download or installation media.
- After reviewing the License Agreement and selecting the installation location select **SOLIDWORKS PDM Standard** for the PDM Product.
- Select the appropriate SOLIDWORKS PDM Client type. For SOLIDWORKS Professional and Premium users select the **SOLIDWORKS PDM Editor** license type.
- Select the **Add-ins** for the PDM client that are required.
- Select **Install** to complete the SOLIDWORKS PDM Client installation.
- Use the *Administration* application to configure SOLIDWORKS PDM Standard. Once completed use the *View Setup* application to create a local vault view on the client. Please review the Administration Guide PDF found under the *Help* menu within the Administration application.



# SOLIDWORKS 2016 - What's New

## PDM Standard Installation

### SOLIDWORKS PDM Standard Server

- The install file for PDM Standard Server can be found under \swpdmserver\setup.exe from the download or installation media.
- After reviewing the License Agreement select the installation location.
- The **Installation Location** setting is where the application files and the Archive folder.
  - The default location for the file archive is: C:\Program Files\SOLIDWORKS PDM\Data
- Select **SOLIDWORKS PDM Standard** from the PDM Product list.
- Select **Archive Server** and **Database Server** from the list of services to install.
- In the **SQL Server** section, designate the SQL Express server location and SQL login with at least 'db\_owner' access.
- Select **Install** to complete the PDM Standard Server installation.

